

*PwC India*

# Archer(GRC) Implementation Capability Statement

# *PwC India Archer Practice - Service Catalogue*

**01**

**Next-Gen Archer Implementation**

– Includes Out of Box & Advanced Use cases

**02**

**Archer Sustenance Framework Implementation**

– Supporting the existing implementations by providing skilled resources

**03**

**Strategy and Road Map Consulting Exercise**

Assisting clients by preparing the Archer implementation strategy

**04**

**Gap Assessment Exercise**

– Conduct diagnostic to identify the gaps in the existing implementation and suggest recommendations for gaps closure

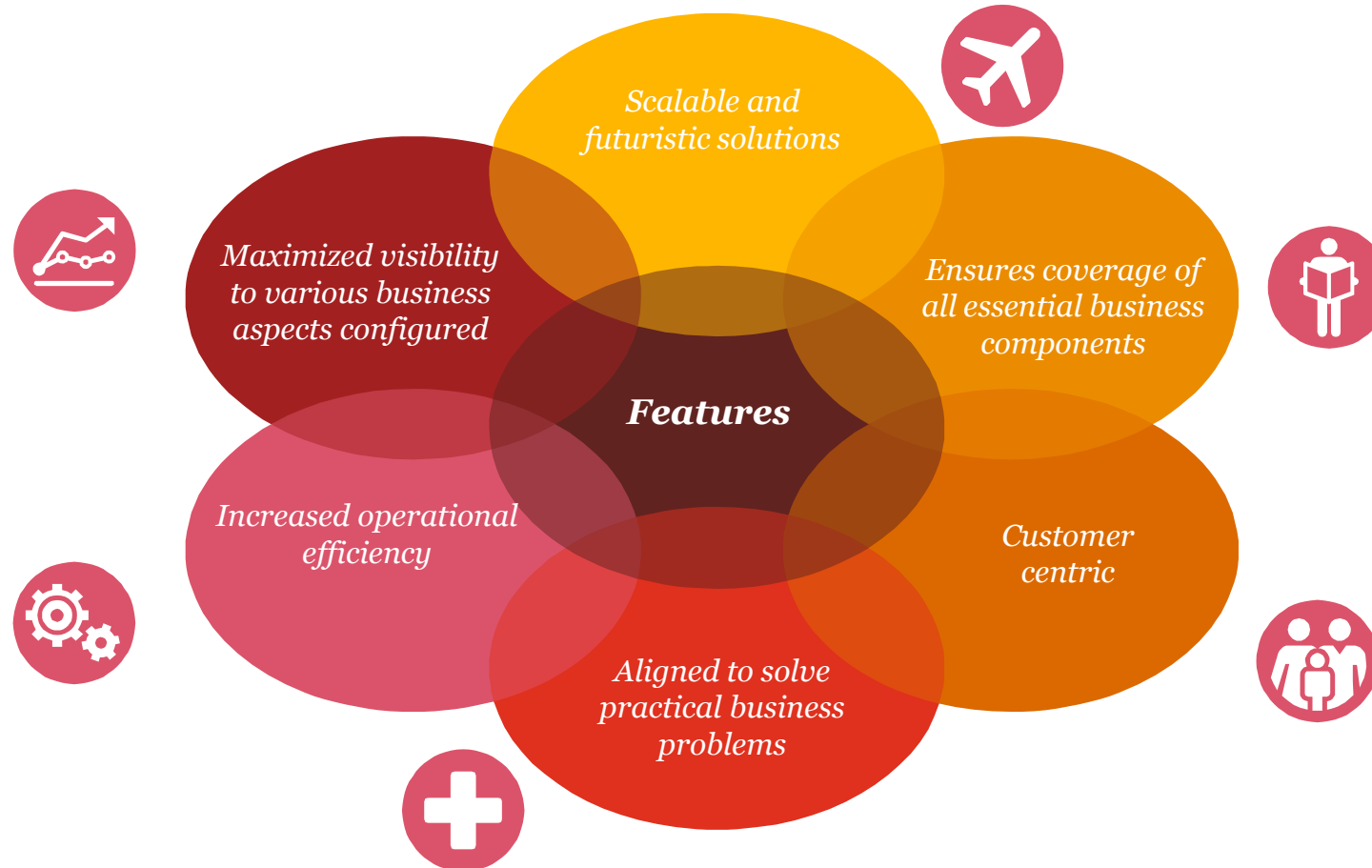
**05**

**Functional Consulting**

– Assist in drafting RFP, BRD, SRS documents & Project management for Implementation

# Features of our Services

*We have deeply ingrained the below mentioned features into each of the our services offered. The features are designed to ensure clear understanding of requirements, robust design, scalable implementations and easy tool management.*



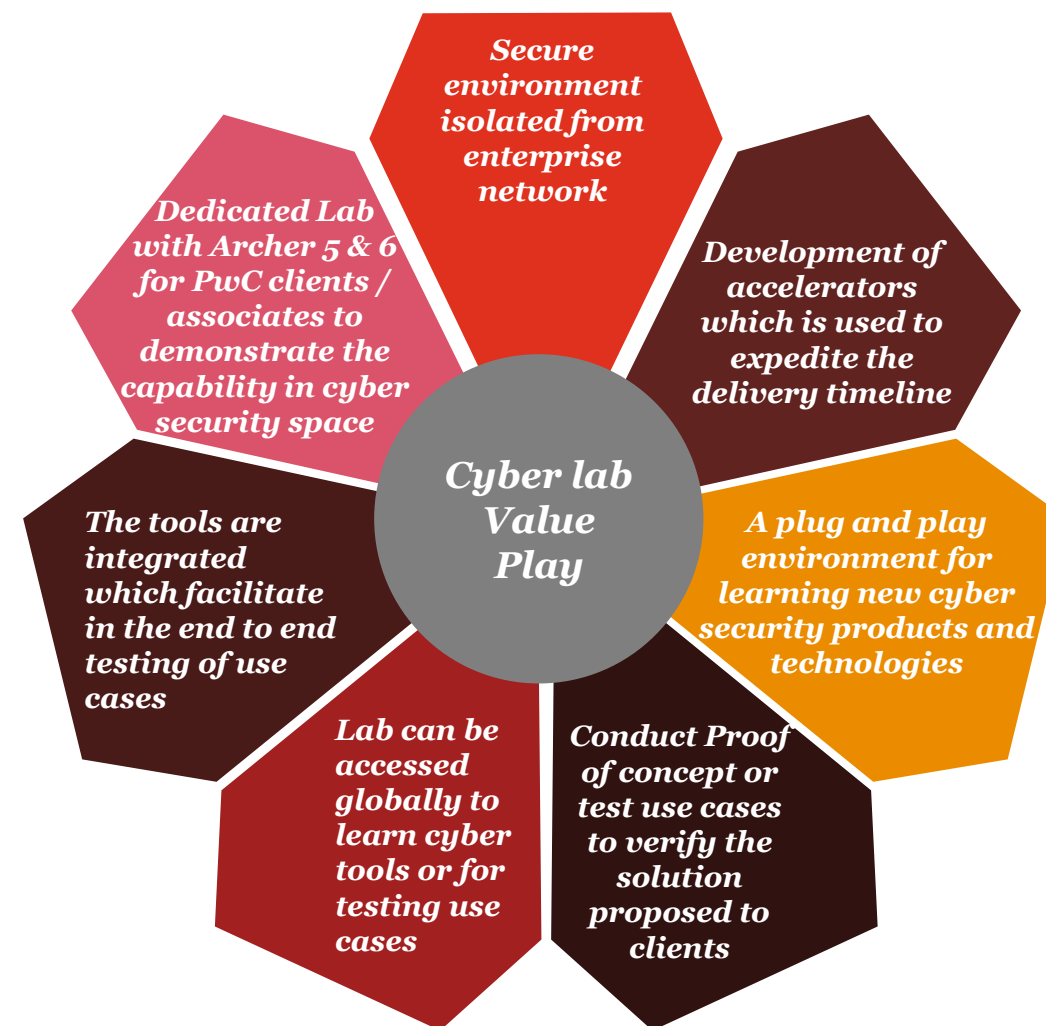
# Our Archer Team

Master (10+ yrs)	Experienced (8 to 10yrs)	Independent (5 to 7 yrs)	Emerging (1 to 4 yrs)
✓	✓	✓	✓

Experienced professionals

- ✓ 35+ GRC professionals backed up by 550+ SME's across Cyber Security domains in India
- ✓ Over 30+ RSA Archer certified
- ✓ Seven successful Archer implementations
- ✓ Average experience of 7 years in RSA Archer implementation

## Certifications



**PwC India Cyber Lab houses instances of Archer along with 40+ cyber tools**

## *Some known use cases*



- ✓ Assistance in automating the out of box GRC processes



- ✓ Automation of Security Operations Centre Process and allied processes such as demand management, service delivery etc.



- ✓ Integration with Arcsight and Remedy gave client an end to end visibility of Security Incidents Status.



- ✓ Establish an eGRC platform to streamline the efforts to manage all third party vendors and partners.



- ✓ Automation of In House Enterprise Security processes on the Archer platform using the customization to provide overview of enterprise security for business decisions



- ✓ Implementation of Cyber Intelligence Platform to provide management and users a view of their cyber security posture through use cases such as IT Risk, Threat Intelligence, Security Incidents, IT Control Assurance and Policy management



- ✓ Enable Archer to support the governance mechanisms to offer single interface to manage the security of infrastructure and applications to provide real-time compliance and dashboards.