



# Global tax compliance services



November 2025

A globally-aligned and centrally-managed approach to navigate an increasingly complex global tax environment combining people-led and technology enabled solutions that solve data challenges and drive enhanced compliance, transparency and value for large multinational entities.

01 Who we are



200+ member team with extensive experience of managing global tax and transfer pricing (TP) compliances for 70+ countries

02 What we do

Direct tax

Indirect tax

Setting up tax centre of excellence (COE)

Transfer pricing

Base Erosion and Profit Shifting 2.0

Tax provision and accounting

03 How we add value

Critical for your success	Our value proposition
 Functional expertise	← Experienced team with expertise in global tax compliance for large MNCs.
 Global access	← Supported by global network firms to deliver coverage across all jurisdictions.
 Technology suite	← Proprietary tools for global compliance, project management, and monitoring.
 Value beyond compliance	← Navigating data challenges to generate insights and enhance tax efficiency.

PwC's Global tax compliance services

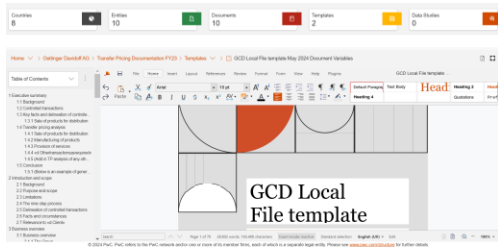
2

# Tech-enabled service offerings

01

## Transfer pricing compliances

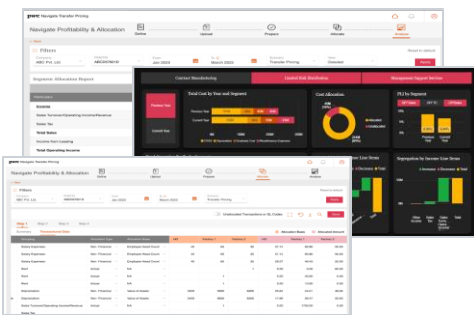
Preparation of transfer pricing reports and master file documentation with the **Transfer Pricing Reporting Suite**.



02

## Segmentation and allocations

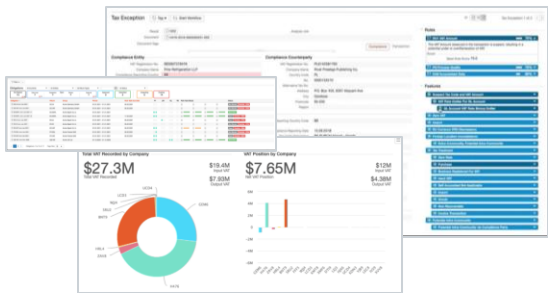
Segmentation and profitability monitoring, cost variance analysis by using the **Transfer Pricing Monitoring Tool**.



03

## Direct and indirect tax compliances

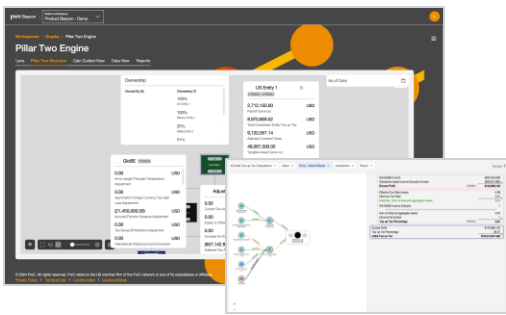
Direct and indirect tax return preparation/reviews, filings and payments through the **Indirect Tax Edge**.



04

## Pillar 2 applicability and impact assessment

Pillar 2 calculations for supporting the complex adoption of Pillar Two rules around the world with the help of the **Pillar 2 Engine**.



### Sightline

A technology based ecosystem that brings everything together to enhance collaboration, and improve data and project management.



Access to PwC network firms across the globe.

# Thank you

## Contact us

### **Vikram Doshi**

Partner, Tax

PwC India

[vikram.doshi@pwc.com](mailto:vikram.doshi@pwc.com)

+91 98493 42195

Data Classification: DCo (Public)

All images in this presentation are protected by copyright, trademark, patent, trade secret and other intellectual property laws and treaties. Any unauthorised use of these images may violate such laws and shall be punishable under appropriate laws. Our sharing of this presentation along with such protected images with you does not authorise you to copy, republish, frame, link to, download, transmit, modify, adapt, create derivative works based on, rent, lease, loan, sell, assign, distribute, display, perform, license, sub-license or reverse engineer the images. In addition, you should desist from employing any data mining, robots or similar data and/or image gathering and extraction methods in connection with the presentation.

In this document, PwC refers to PricewaterhouseCoopers Private Limited (a limited liability company in India having Corporate Identity Number or CIN : U74140WB1983PTC036093), which is a member firm of PricewaterhouseCoopers International Limited (PwCIL), each member firm of which is a separate legal entity.

© 2025 PricewaterhouseCoopers Private Limited. All rights reserved.

SG/November 2025 – M&C 49932