

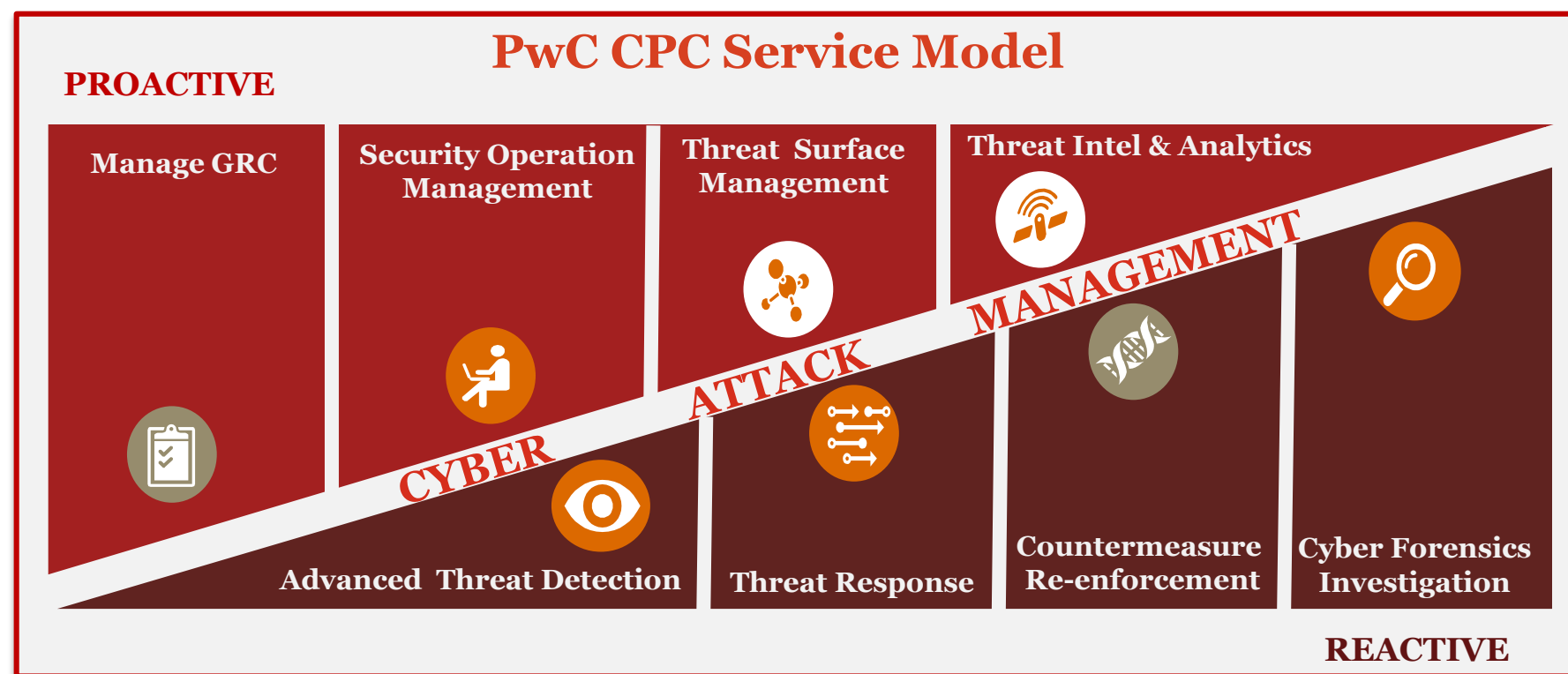
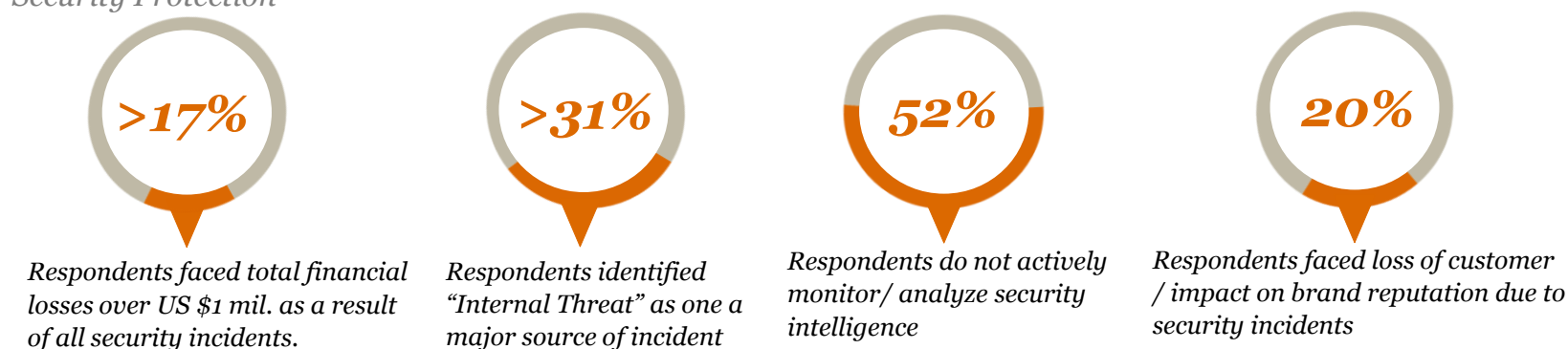
## *PwC's Cyber Protection Centre (PwC CPC)*

## Is your organization ready for managing cyber attacks ?

In a heavily inter-connected and competing business environment, the Cyber-attacks have only escalated in frequency, severity, complexity and impact. The cyber security threat is not only to service continuity or critical data, but also damages the company's brand reputation and revenue.

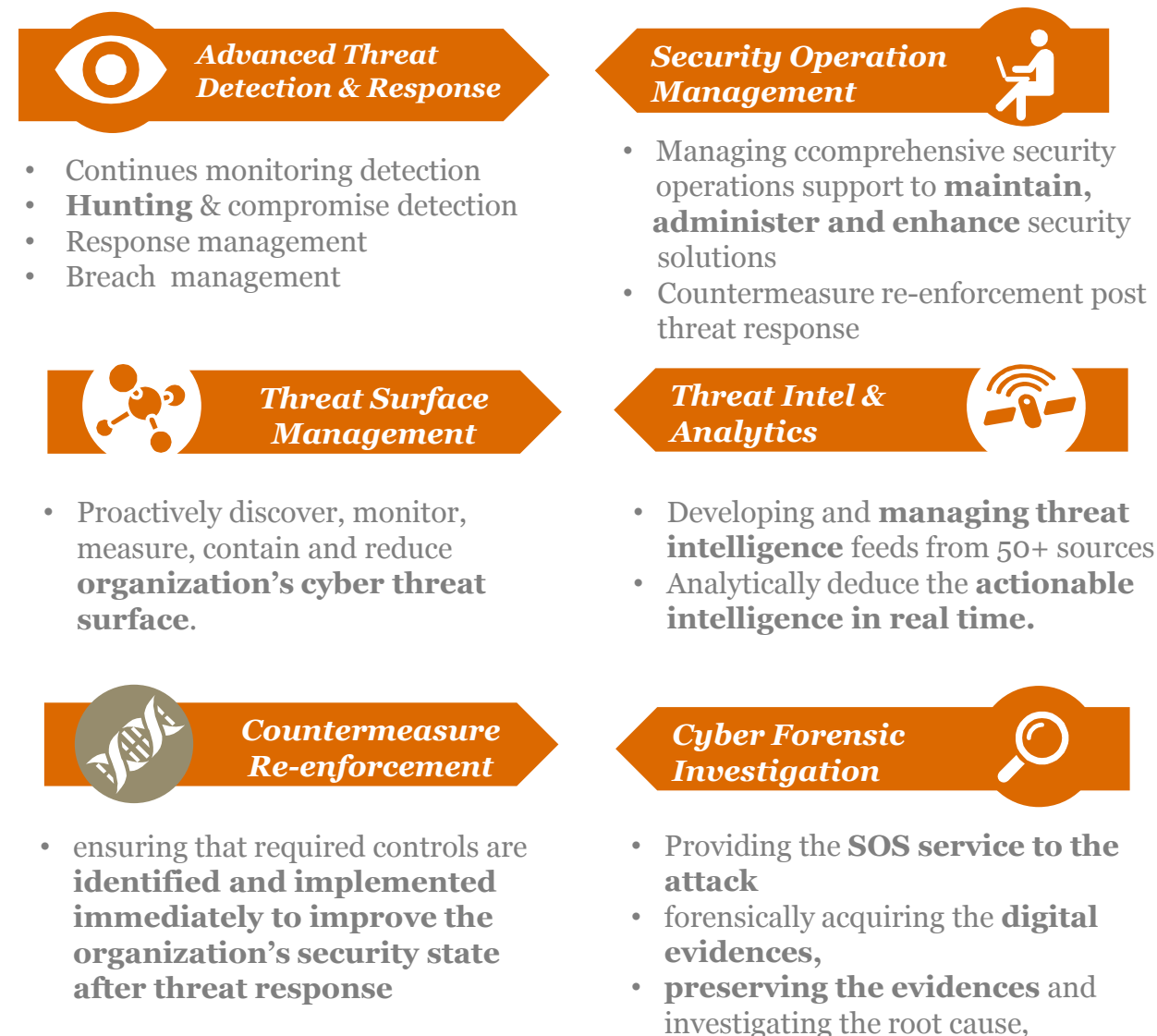
Hence, it is must for enterprises to discover & govern, monitor & manage, and detect & respond to these Cyber-attacks. Traditional prevention and detection controls have proved largely ineffective against the increasingly adept and complex assaults. Organizations of all sizes are grappling with what to do or do not have the skilled resources to combat today's highly technical and aggressive cyber criminals. It is distracting the organizations from focus on their core business and they are unable to cap the investments required to be "Secure".

*Many industry reports including GSISS 2016 Survey report further emphasizes the need of comprehensive Cyber Security Protection*



## How does PwC CPC helps in managing cyber attacks?

*PwC CPC helps organization's in defending against the attacks by using proactive & reactive intelligence-based approach , constant near real-time monitoring and analysis of payloads, network traffic and endpoints, together with on-demand forensics and automated investigations to provide complete threat visibility and efficient threat management across the business operation.*





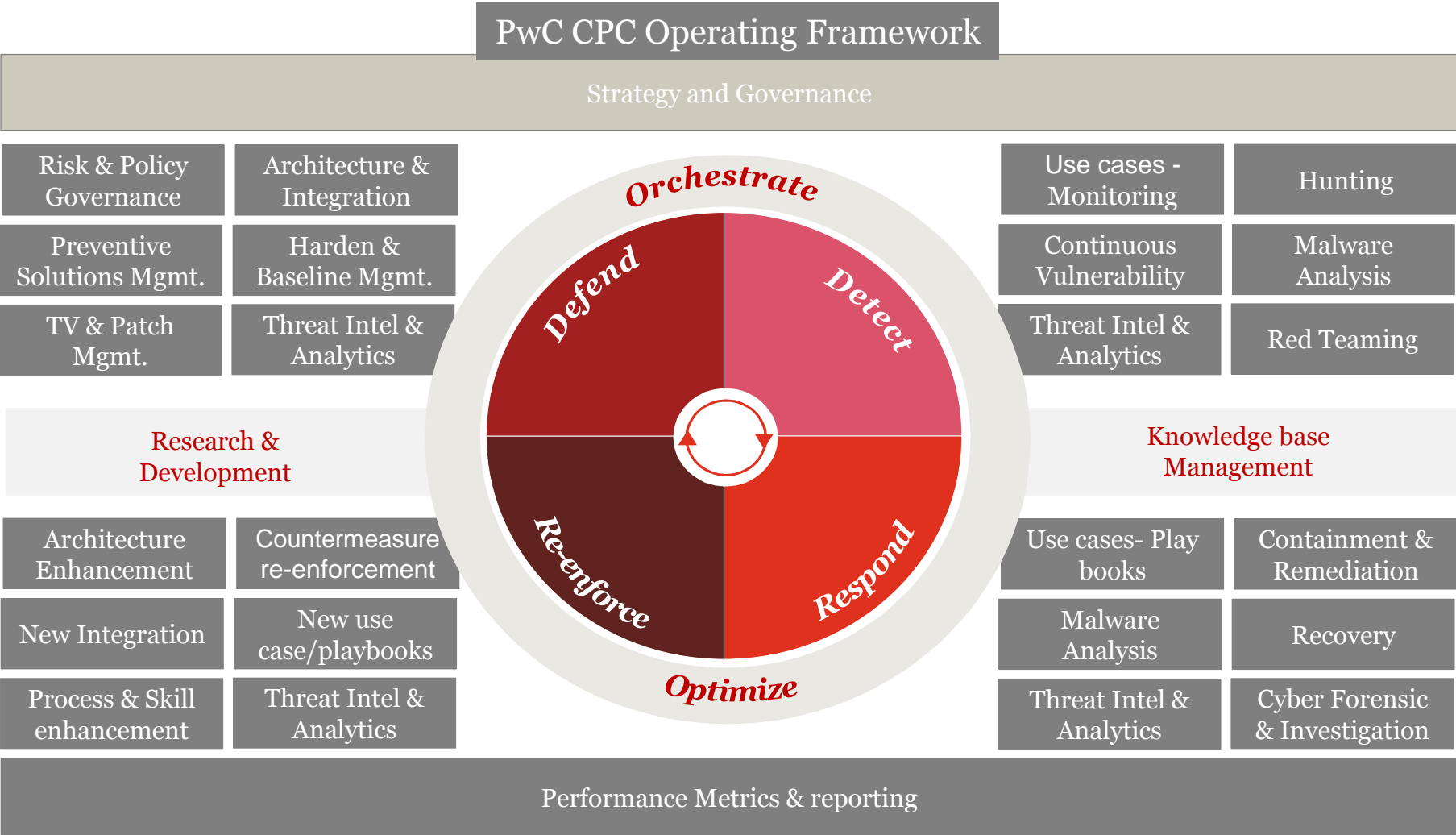
# PwC's Cyber Protection Centre (PwC CPC)

## Key Features of PwC Cyber Protection Center (CPC)

- Robust automated **Operating Model** for security operations services with **advance attack management capabilities**.
- State of art, highly secure, resilient **Cyber Protection Center** with advance collaboration facilities located at Primary and DR sites in local country.
- Year all operations support for 60K+ hours
- Flexible delivery models ( Onsite / Offsite / Hybrid)
- Dedicated team of **110+ experts** in
  - Advances Preventive/security solutions,
  - Intrusion analysis & Incident handling
  - Multiple SIEM & Analytics solutions
  - Hunting Experts and Malware Analyst
  - Threat Intel Developer and Analysts
  - Forensic examiners and
  - Virtual CISO's.
  - CPC core technology SME's
- CPC is equipped with Advance Security tools deployed in highly secure network within PwC.
  - SIEM** solution with advance correlation & analytics feature
  - Incident Response – **Orchestration tool**
  - PwC Threat intel Platform (TIP)** with more than 50+ external threat feeds
  - Analytics platform** with real time machined learning, User behaviour and historical analytics capability
  - Dedicated Malware Analysis Lab** with next generation sandboxing capability
  - PwC proprietary tools for **Cyber Incident Response and Compromise Assessment**, NetHunt-network level platform for analyzing egress traffic, baiting system to detect malicious lateral movement, for security threat surface management
  - Service management tool for **service operations management**
  - Online real-time Dashboard** for Governance & transparency

The PwC CPC Service operating framework consider the importance of multi-tiered approach driven by business objective and performance, so in addition to tactical incident detection and response, CPC also gives a strategic solution with predictive capabilities that help to proactively anticipate and hunt for the next likely attack. CPC intelligence-driven approach results in better protection of critical assets from targeted attacks, more efficient investigation processes and lower organizational risk.

PwC CPC follows **(DR)<sup>2</sup> [Defend-Detect-Respond-Re-enforce]** Attack life cycle Approach to **“Orchestrate & Optimize”** the Security Operations and Attack Management which gives enterprises and organizations an axe to stay ahead of attackers in cost effective manner.



Contact our team today to discuss a plan for your organization

**Sivarama Krishnan**  
Leader, Cyber security  
+91 9650788787  
sivarama.krishnan@in.pwc.com

**Manu Dwivedi**  
Partner, Cyber security  
+91 9611114377  
manu.dwivedi@in.pwc.com

**Siddharth Vishwanath**  
Partner, Cyber security  
+91 9167190944  
siddharth.vishwanath@in.pwc.com

**Sundareshwar Krishnamurthy**  
Partner, Cyber security  
+91 9930105282  
Sundareshwar.krishnamurthy@in.pwc.com

**PVS Murthy**  
Executive Director, Cyber security  
+91 9867743050  
pvs.murthy@in.pwc.com

**Hemant Arora**  
Executive Director, Cyber security  
+91 9711559686  
hemant.arora@in.pwc.com