



Siddharth Mehta
Tax Technology Leader
PwC India
siddharth.m@pwc.com

Prashanth Agarwal
Partner, Tax Technology
PwC India
prashanth.agarwal@pwc.com

Accelerator for human-led, tech-powered tax function

Navigate Tax Suite

For further information,
write to us at
in_navigatetax@pwc.com.

Tax landscape

The compliance needle has moved,

Data-driven compliances – online, granular, real time

360-degree profiling – convergence between Goods and Services Tax (GST), customs and direct tax

Digital tax administration – faceless assessments

Analytics – to identify evasion or non-compliances

significantly impacting the tax function.

More compliance, less interpretation

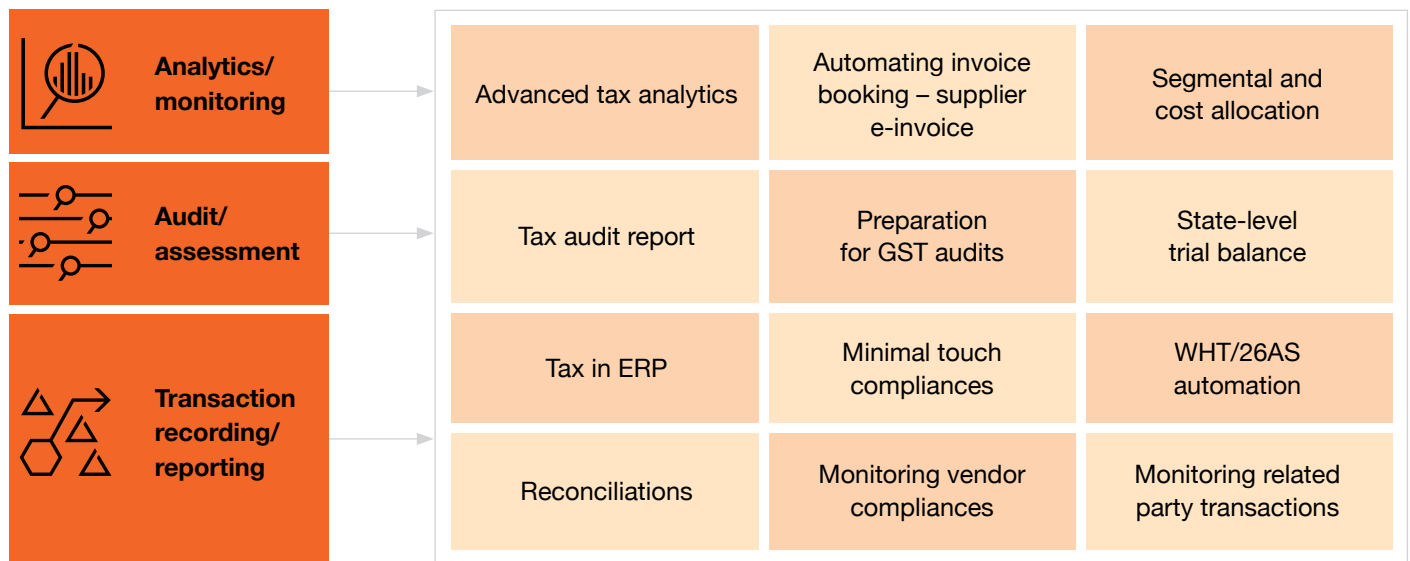
Greater onus – higher stakes

Move towards automation/ centralisation/ standardisation

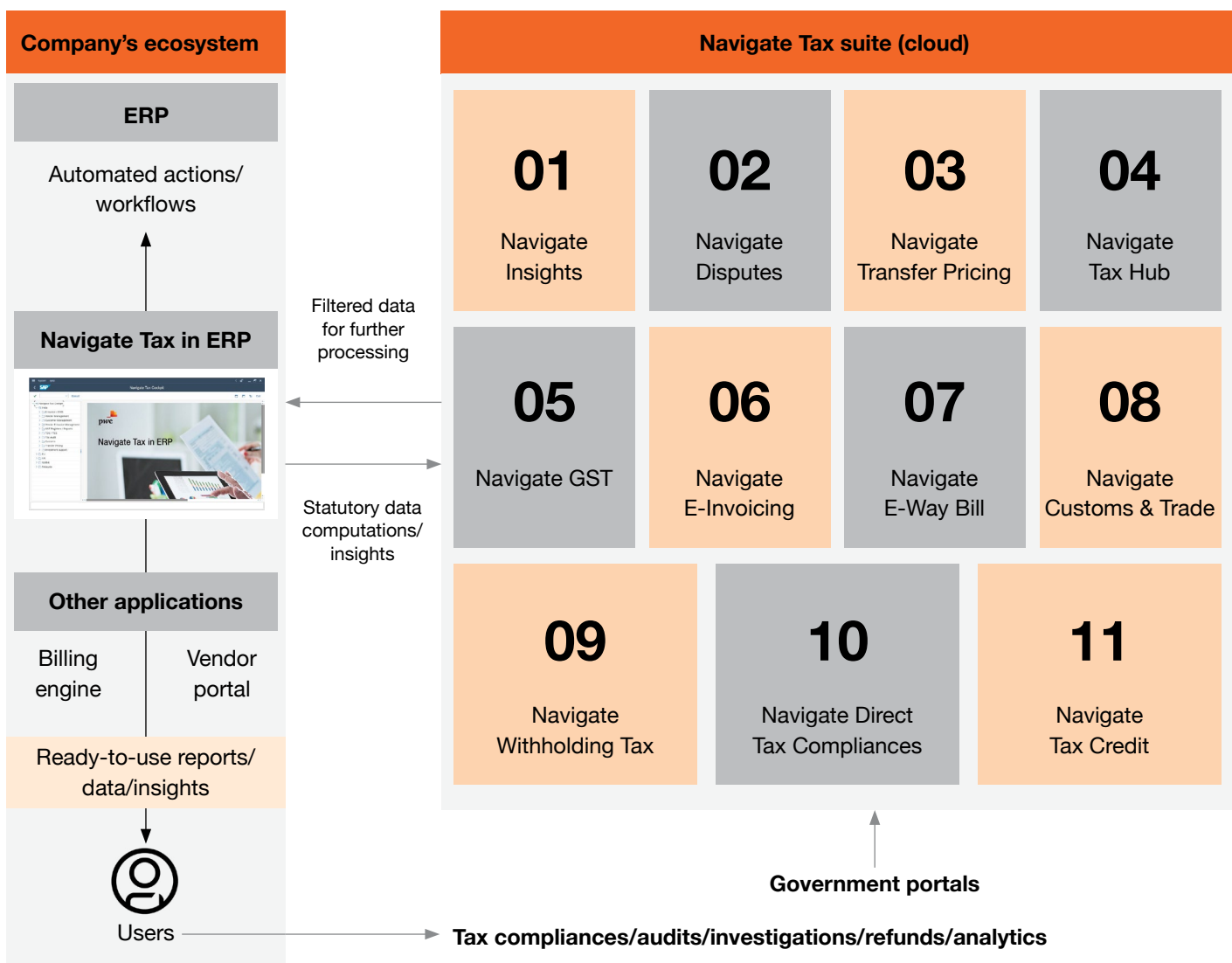
Increased touchpoints with other business functions

Increasing management expectations – more with less

Organisations are looking at technology as the primary enabler to address specific tax compliance and reporting requirements.



Navigate Tax suite is an integrated platform that helps address diverse tax compliance, reporting, analytics and workflow automation requirements of the tax and finance function.



Navigate Tax Suite-milestones

3,500+

companies

300+

Companies using tax in ERP

64 bn+

Transactions reconciled

600 mn+

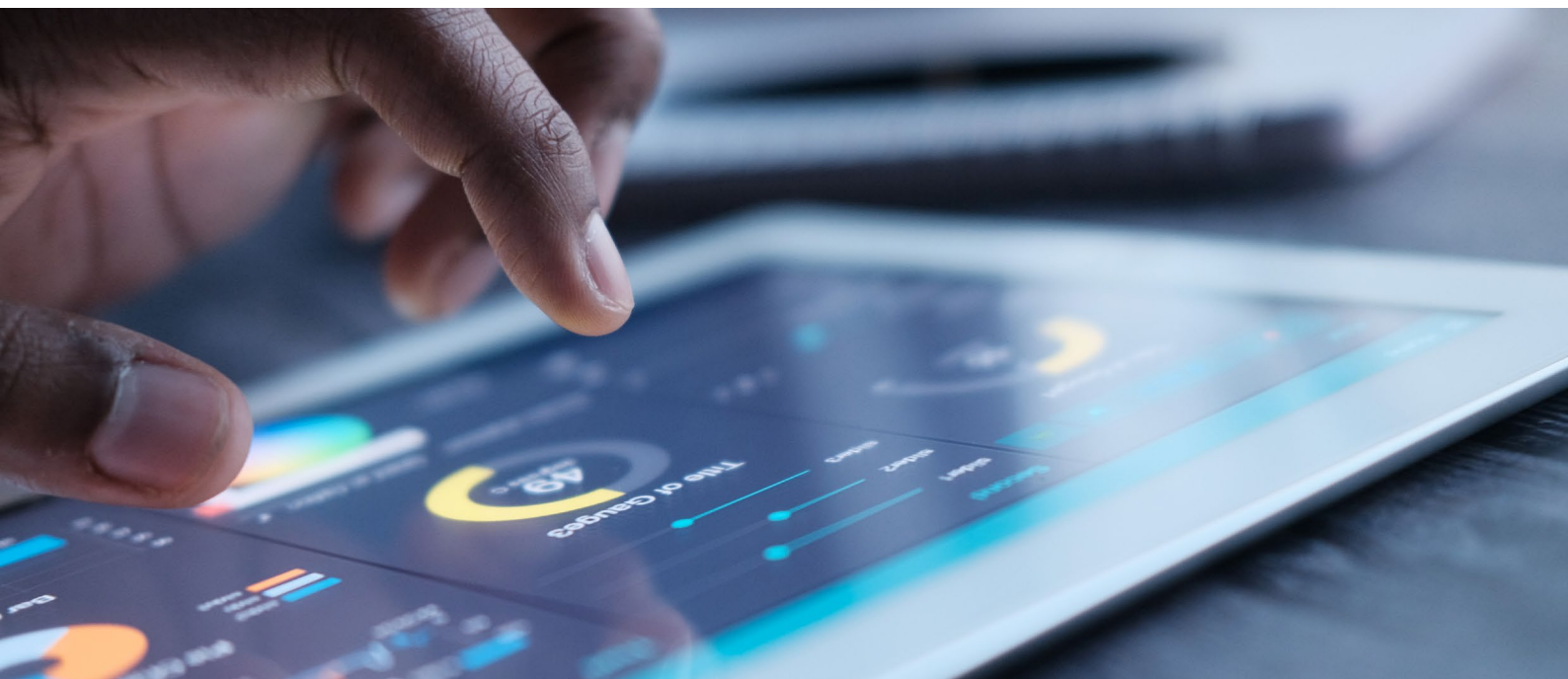
E-invoices generated

3,000+

Income tax returns processed

20 mn+

Shareholders' dividend data processed



Generative AI – the next wave of transformation in tax and finance functions



Multi-dimensional
transaction
analysis



Product/service
classification



Document
generation/summary/
search



Analytics – tax and
beyond



About PwC

We help you build trust so you can boldly reinvent

At PwC, we help clients build trust and reinvent so they can turn complexity into competitive advantage. We're a tech-forward, people-empowered network with more than 370,000 people in 149 countries. Across assurance, tax and legal, deals and consulting we help build, accelerate and sustain momentum. Find out more at www.pwc.com.

PwC refers to the PwC network and/or one or more of its member firms, each of which is a separate legal entity. Please see www.pwc.com/structure for further details.

© 2025 PwC. All rights reserved.

pwc.in

Data Classification: DC0 (Public)

In this document, PwC refers to PricewaterhouseCoopers Private Limited (a limited liability company in India having Corporate Identity Number or CIN : U74140WB1983PTC036093), which is a member firm of PricewaterhouseCoopers International Limited (PwCIL), each member firm of which is a separate legal entity.

This document does not constitute professional advice. The information in this document has been obtained or derived from sources believed by PricewaterhouseCoopers Private Limited (PwCPL) to be reliable but PwCPL does not represent that this information is accurate or complete. Any opinions or estimates contained in this document represent the judgment of PwCPL at this time and are subject to change without notice. Readers of this publication are advised to seek their own professional advice before taking any course of action or decision, for which they are entirely responsible, based on the contents of this publication. PwCPL neither accepts or assumes any responsibility or liability to any reader of this publication in respect of the information contained within it or for any decisions readers may take or decide not to or fail to take.

© 2025 PricewaterhouseCoopers Private Limited. All rights reserved.

SG/September 2025 - M&C 48214